



**36th Annual Meeting (Hokkaido) of
The Japanese Society for Environmental Education**

**Conference Theme: The Future of Environmental
Education from the Perspective of Biodiversity**

Conference Program

October 9 (Thursday)-12 (Sunday), 2025

Host: The Japanese Society for Environmental Education
(The 36th Annual Meeting Organizing Committee)

Venue: Hokkaido University of Education, Kushiro Campus & Online

INDEX

1. Greetings from the Chairman of the Organizing Committee	4
2. Outline of the Event	5
3. Conference Schedule	5
4. Venue	8
5. To the Participants	12
6. Oral Presentations	14
7. Poster Presentations	16
8. Independent Research Projects	16
9. Events for Conference Participants	17
10. Public Events	22
11. Program (in Japanese)	27
12. Cancellation Criteria and Responses to Natural Disasters, etc.	39

[Members of the JSFEE 36th Annual Meeting Organizing Committee]

Chairman:

Ayumu NOJO (Hokkaido University of Education, Iwamizawa Campus)

Vice Chairman:

Takashi NOMURA (Hokkaido University of Education, Kushiro Campus)

Secretary General:

Sumiyuki TANAKA (Junior College of Sapporo Otani University)

Members:

ASAKURA, Takuya (Sapporo Maruyama Zoo)

HASHIMOTO, Rika (Hokkaido University of Education, Iwamizawa Campus)

KAWABATA, Masashi (Hokkaido Prefectural Board of Education)

KIKUCHI, Minoru (Nayoro City University)

MIYAGI, Moemi (Hokkaido Environment Foundation)

NAKAMOTO, Takanori (Shokei University)

OHKURA, Shigeru (Tokyo University of Agriculture and Technology)

OKA, Kengo (Hokusho University)

ORUI, Sachiko (Kuromatsunai Bunamori School)

SUGAWARA, Minami (Asukanomori Certified Children's Center)

SUMIKAWA, Yume (Hokkaido University of Education, Kushiro Campus)

TAKAGI, Harumitsu (Kuromatsunai Bunamori School)

TAMURA, Kazuyuki (Naruto University of Education)

TANAKA, Kuniaki (Emeritus Professor, Hokkaido University of Education)

1 . Greetings from the Chairman of the Organizing Committee

Organizing Committee Chairman for the 36th Annual Meeting

Ayumu NOJO

Thank you very much for attending the 36th Annual Conference of the Japanese Society for Environmental Education (JSFEE), Hokkaido, Japan. On behalf of the Organizing Committee, I would like to thank you for this opportunity to exchange the results of excellent domestic practices and research on environmental education in Kushiro, which is one of Hokkaido's richest natural environments.

The theme of this year's annual conference is “The Future of Environmental Education from the Perspective of Biodiversity,” and we have decided to hold a keynote lecture and six open symposia to explore the issue of biodiversity, which is a particularly pressing issue among the various environmental problems that are progressing on a global scale and the many educational issues involved in these problems. Although it is too large an issue to be dealt with in a single annual meeting, we are looking forward to a forum where we can discuss and learn from each other about the past and future of biodiversity education, what the environment is and what environmental education (studies) is as a prerequisite for society and the economy to function.

The education and research on biodiversity discussed at this year's conference are being conducted outside of the JSFEE, and a wide variety of practices and studies are being developed from different perspectives, viewpoints, and arguments. However, a systematic perspective to evaluate and coordinate them longitudinally and cross-sectionally is incomplete and remains an "old and new issue.” In order for our Society to play a role as a central nerve center for Environmental Education, we have sought to have active discussions and exchanges with people who are active in fields other than the Society from the perspective of biodiversity, so that we can play a role as a central organization for gathering the wisdom gained through networking with various fields.

Last year, the Society formulated three visions for the future: “Connecting People and Nature,” “Connecting Research and Practice,” and “Connecting Academia and Community,” and envisioned what Environmental Education Studies could be in the post-SDG era as an extension to society as a whole. However, as an academic organization, it is of primary importance to promote creative activities, i.e., academic research on Environmental Education. In particular, the number of private organizations and schools in the Society's relevant areas is an order of magnitude greater than those of other academic societies. In this context, I hope that this year's meeting will be of some significance for the Society to establish a firm position as an academic organization and to create “shoulders of giants” through the accumulation of knowledge that is appropriate for this purpose.

The organizers of this year's conference have received a grant from “Water and Green Forest Fund” for 2025 of the National Land Afforestation Promotion Organization and Kushiro Tourism & Convention Association, and supported by Hokkaido, Hokkaido Environmental Foundation, Hokkaido Council of UNESCO Association, Hokkaido Shinbun Press Kushiro Branch, Kushiro News and NHK Kushiro. Last but not least, I would like to express my sincere gratitude to all of you for your understanding and support of Environmental Education Studies, which has made this conference possible.

2. Outline of the Event

- Period: October 9 (Thursday) – 12 (Sunday), 2025

* Some excursion are held on October 13 (Monday).

- Venue: Hokkaido University of Education, Kushiro Campus & Online (Zoom)
- Host: The Japanese Society for Environmental Education (36th Annual Meeting Organizing Committee)
- Supported by: Hokkaido, Hokkaido Prefectural Board of Education, City of Kushiro, Kushiro City Board of Education, ESD Resource Center of Japan (Hokkaido Branch), Hokkaido Environment Foundation, Hokkaido Council of UNESCO Association, Hokkaido Shinbun Press Kushiro Branch, Kushiro News and NHK Kushiro
- Assisted by: “Water and Green Forest Fund” for 2025 of the National Land Afforestation Promotion Organization and Kushiro Tourism & Convention Association
- Webpage for the 36th annual meeting of the Japanese Society for Environmental Education:

https://www.old.jsfee.jp/members/meeting/113-annual-meeting/607-jsfee36_hokkaido2025

3. Conference Schedule

	9:00	10:00	11:00	12:00	13:00	14:00	15:00	16:00	17:00	18:00	19:00	20:00	
October 9 (Thurs)	Oral Presentations (online)			Oral Presentations (online)									
	Excursion 3: Mt. Tarumae round-trip trekking in autumn			Excursion 2: Tour of Lake Toya and Mt. Utsu			Excursion 1: Japanese crane in Tsurui Village in autumn						
	Excursion 3: Mt. Tarumae round-trip trekking in autumn												
	9:00	10:00	11:00	12:00	13:00	14:00	15:00	16:00	17:00	18:00	19:00	20:00	
Oct 10 (Friday)	Excursion 4: Visiting Morindonomori			Excursion 7: Shiratoko Gaku, Rausu Town's integrated education for elementary, junior high and high school students			Registration	Students & Young Members' Meeting (face-to-face & online)		Registration	Members' Roundtable Meeting		Seminar on Article Writing (face-to-face & online)
	Excursion 5: Local observation tours of rare species around Lake Shikaribetsu			Excursion 6: Digital Detox Experience Tour at Farm Inn Torch in Tsurui Village									
	Venue: Hokkaido University of Education Kushiro Campus												
	9:00	9:00-11:45	12:00	13:00	14:00	14:45-16:15	17:00	18:00	19:00	20:00			
Oct 11 (Saturday)	Registration	Oral Presentations	Lunch Break	Registration	Keynote Speech	Break	Public Symposium 1	Break	Public Symposium 4	Break	Reception Dinner		
		Public Symposium 2					Public Symposium 5						
		Public Symposium 3					Public Symposium 6						
		Environmental Education Messe											
	Venue: Hokkaido University of Education Kushiro Campus (Registration at the entrance of Kushiro Campus Library)												
	9:00	10:00	11:00	12:00	13:00	14:00	15:00	16:00	17:00	18:00	19:00	20:00	
Oct 12 (Sunday)	Oral Presentations			Lunch Break		Research Projects	Break	Independent Research Project Presentations					
	Judging of the Encouragement Awards												
	Poster Presentation												
	English Presentations		International Exchange 1 (face-to-face & online)	International Exchange 2									
	Report on UNESCO Schools and Other Schools' Education Practices (Poster Presentations)					Excursion 8: UNESCO School Workshop							
	Environmental Education Messe												
	Venue: Hokkaido University of Education Kushiro Campus (Registration at the entrance of Kushiro Campus Library)												
	9:00	10:00	11:00	12:00	13:00	14:00	15:00	16:00	17:00	18:00	19:00	20:00	
Oct 13 (Monday)	Excursion 10: The place we live--Walking in the City, Feeling the City: Environmental Education Connected through Kushiro												
	Excursion 9: Kushiro Marshland Development and Invasive Alien Species Issues												
	Excursion 2: Tour of Lake Toya and Mt. Utsu (2)												
	Excursion 11: KIWC 30th Anniversary Project: Communicating the Mechanism of Wetlands												
	Excursion 12: Rausu facility tour and Hokkaido Arrangement project WILD experience												
	Excursion 13: The Soil Will Save Us--Why the Ground Beneath Our Feet Could Be the Answer to the Global Climate Crisis												

* Program with classroom numbers (spread sheet (in Japanese)) <https://x.gd/a31Vx>

* Students & Young Members' Meeting, Keynote Speech, Public Symposia and Environmental Education Messe are open to public (no registration fee is required).

* The Keynote Speech on October 11 (Saturday) is face-to-face participation only. (We apologize for the wrong information in the past about mentioning online availability.)

<Details of the Conference>

October 9 (Thursday) @ online (Zoom)

Oral Presentations = 9:00-12:00 & 13:00-17:00

* Meeting IDs and Passcodes will be announced around October 8 (Wednesday).

October 10 (Friday) @ Hokkaido University of Education Kushiro Campus Room 303 & Online (Zoom)

Students & Young Members's Meeting = 15:00-17:00

Member's Roundtable Meeting = 17:30-18:30

Seminar on Article Writing = 18:45-20:30

* Meeting ID and Passcode for "Students & Young Member's Meeting" and
"Member's Roundtable Meeting" are:

Meeting ID: 831 0392 8234, Passcode: 758898

* Meeting ID and Passcode for "Seminar on Article Writing" are:

Meeting ID: 922 0198 3721, Passcode: 665407

October 11 (Saturday) @ Hokkaido University of Education Kushiro Campus

Registration Opens = 8:15 (First floor entrance of the library)

Oral Presentations = 9:15-12:10 (Rooms: 201, 202, 301, 302 and 304)

Poster Presentations = 9:15-12:10 (Small Hall)

Environmental Education Messe = 9:15-18:00 (Classroom Building 1st floor Hall, Research Institute
for Remote and Small School Education)

Keynote Speech = 13:00-14:30 (Small Hall & Room 303)

Them: "The Future of Environmental Education Studies from a Biodiversity Perspective"

Speaker: Mr. Masashi OHARA (Emeritus Professor, University of Hokkaido, Chief Director of the
Hokkaido Environment Foundation)

Public Symposium Session 1 = 14:15-16:15

Public Symposium 1: "Biodiversity Conservation and the Issues of Renewable Energy" (Room 303)

Public Symposium 2: "Biodiversity and Childcare in Nature" (Room 304)

Public Symposium 3: "Biodiversity and Zoo/Museum Education" (Small Hall)

Public Symposium Session 2 = 16:30-18:30

Public Symposium 4: "Biodiversity and Wetland Education/School Education" (Room 303)

Public Symposium 5: "Biodiversity and Invasive Alien Species Issue" (Small Hall)

Public Symposium 6: "Biodiversity Conservation and Economic/Industrial Activities" (Room 304)

Reception Dinner = 18:30-20:30 (University Cafeteria)

October 12 (Sunday) @ Hokkaido University of Education Kushiro Campus, English Presentations and International Exchange Meeting are also available online

Registration Opens	= 8:15 (First floor entrance of the library)
Oral Presentations	= 9:00-12:00 (Rooms: 201, 202, 301, 302 and 304)
Judging of Encouragement Awards	= 9:00-12:00 (Room 305)
English Presentations	= 10:00-11:00 (Group Study Room 1 in Library)
Poster Presentations	= 9:00-13:00 (Small Hall: Core time = 12:00-13:00)
Environmental Education Messe	= 9:00-16:15 (Classroom Building 1 st floor Hall, Research Institute for Remote and Small School Education)
International Exchange Meeting	= 11:00-13:00 (Group Study Room 1 in Library)
Research Groups	= 13:00-14:30 (Rooms: 201, 202 and 301)
Independent Research Groups	= 15:30-17:30 (Rooms: 201, 202, 301 and 304)

* Meeting ID and Passcode for English Presentations and International Exchange Meeting will be announced around October 8 (Wednesday).

4. Venue

<How to get Hokkaido University of Education Kushiro Campus>

Address: 15-55, Shiroyama, Kushiro City, Hokkaido, 085-0826

By JR

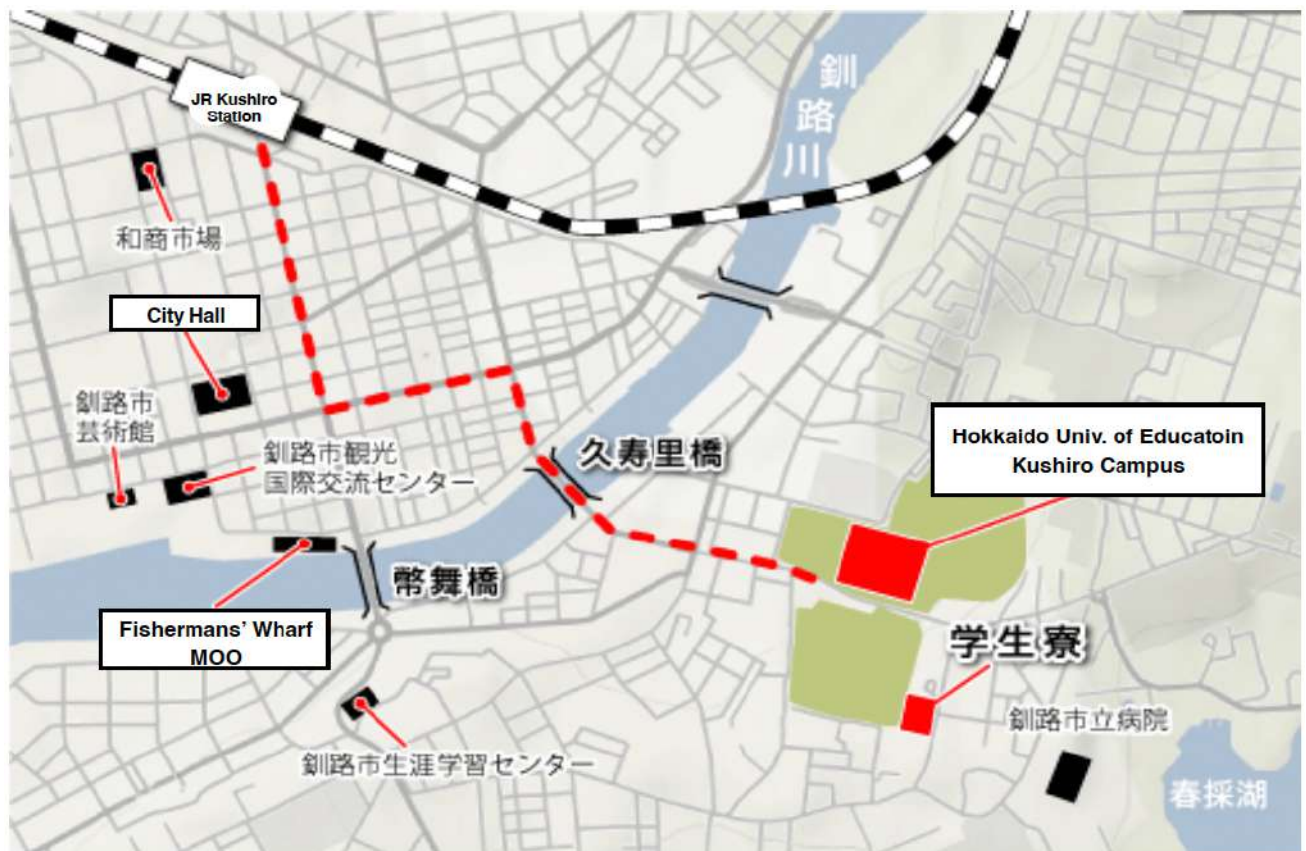
From JR station “Kushiro Eki”, use Kushiro Bus (#3 Musa Line OR #32 Beppo Line) and get off at “Yamashiro Jyu-jiro (Yamashiro Intersection)” (after about 10 min ride), then it is about 4 min walk from the bus station to the campus.

By Intercity Bus

There are intercity buses from Sapporo, Asahikawa, Obihiro, Kitami and Nemuro. Bus station is “JR Kushiro Eki Mae (In front of Kushiro Station)” or “Fisherman’s Wharf MOO, Intercity bus terminal”.

From Kushiro Airport

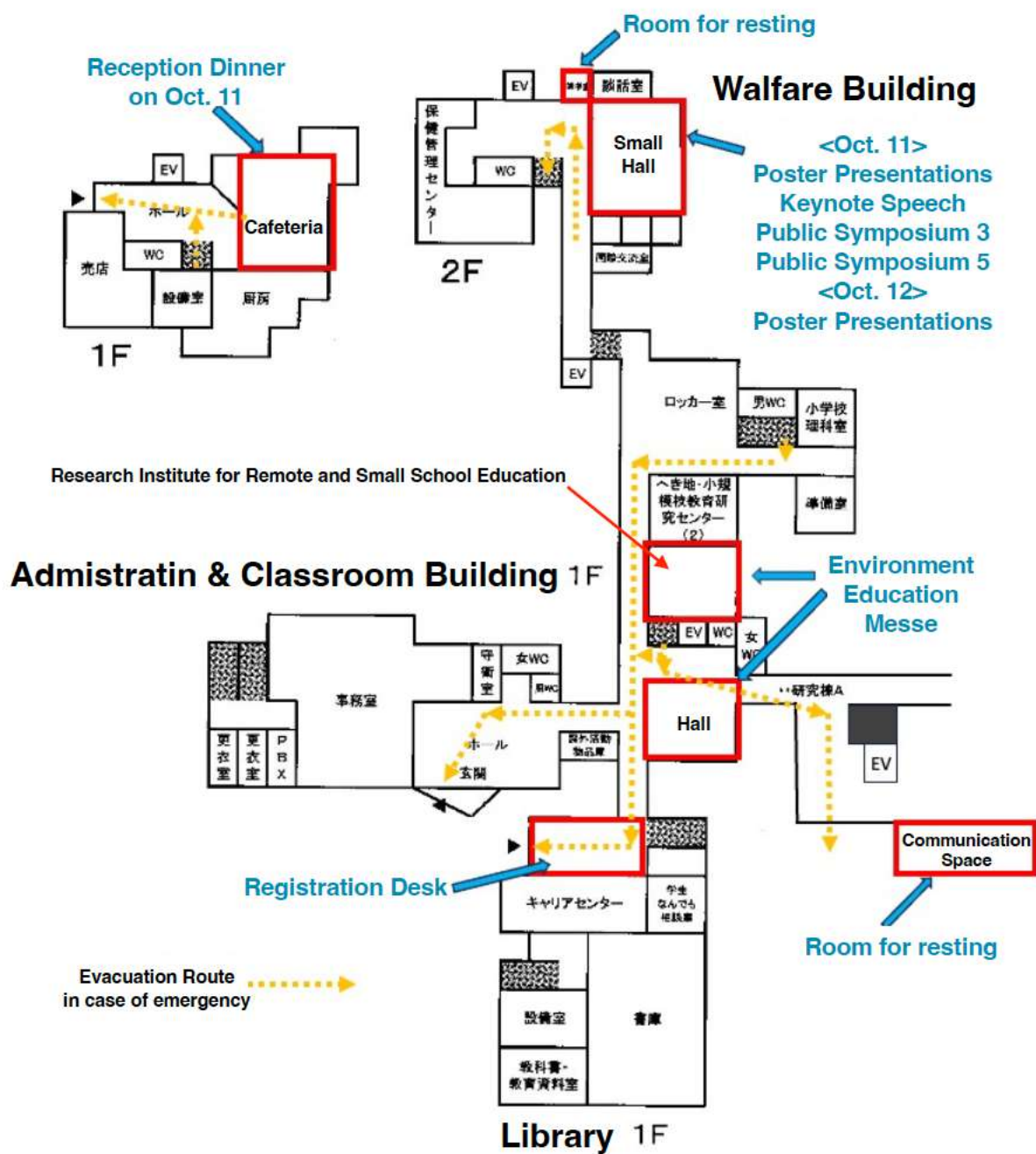
The connecting bus between Kushiro Airport and the city departs from Kushiro Airport about 15 to 20 minutes after the plane arrives. It takes about 45 minutes to JR Kushiro Station, about 55 minutes to Fisherman's Wharf MOO, and about 55 minutes to Kushiro City Hall.



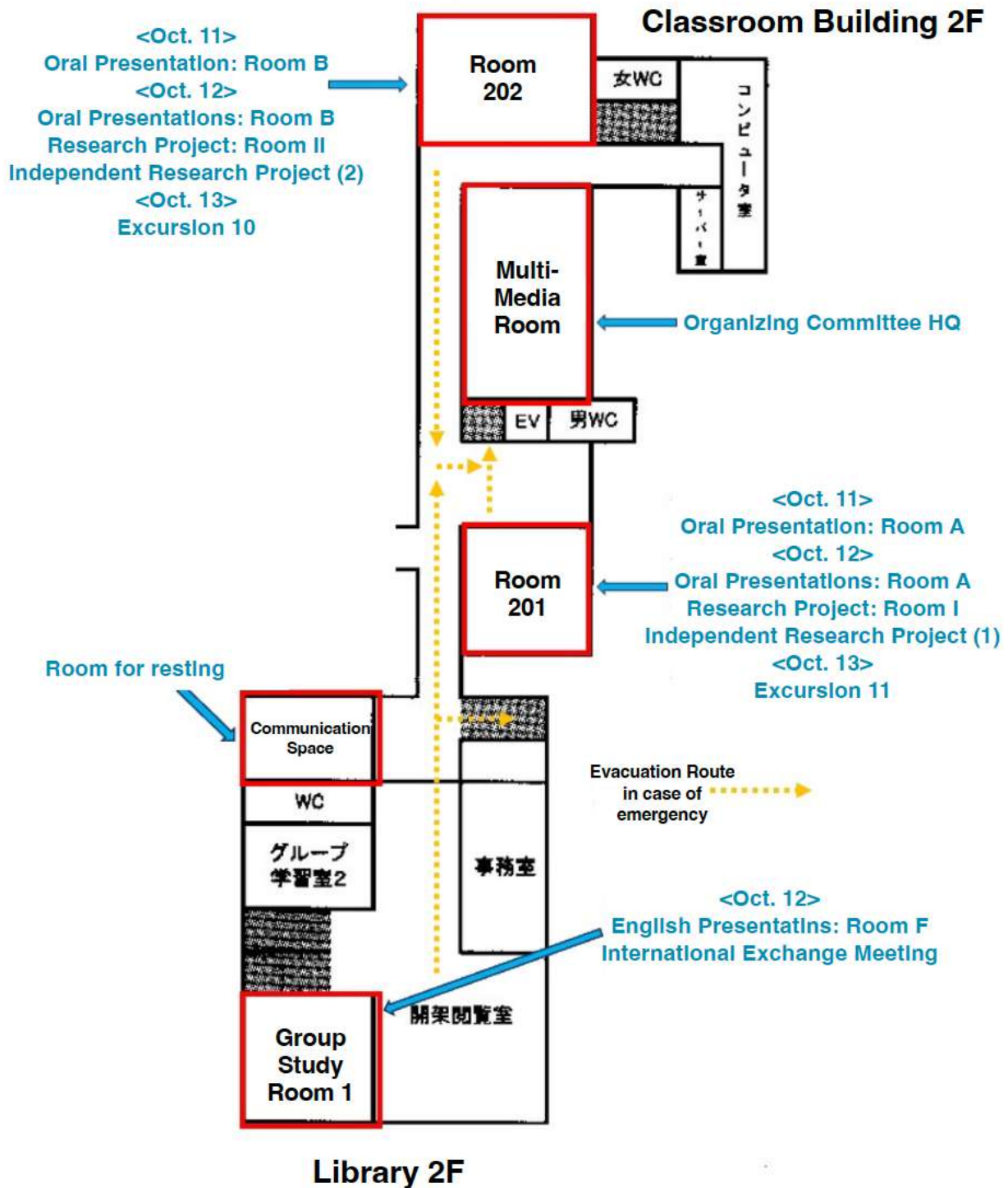
Reprinted from the access map of Hokkaido University of Education, Kushiro

(<https://www.hokkyodai.ac.jp/kus/access/index.html>)

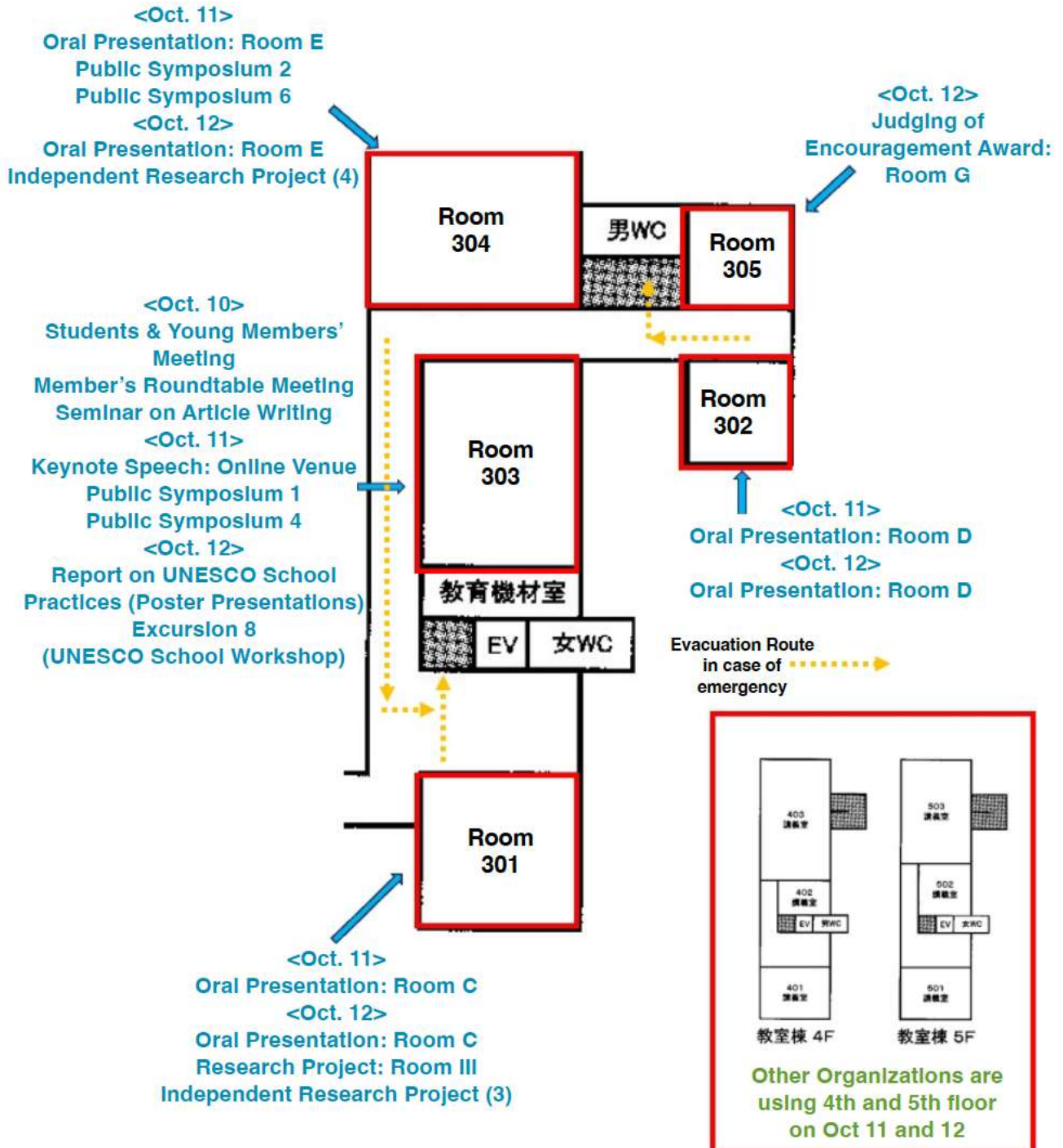
Kushiro Campus Building Map 1



Kushiro Campus Building Map 2



Kushiro Campus Building Map 3



5. To the Participants

Fact-to-face Participation

● In General

- Registration desk for the conference will be located at the entrance of Room 303 on Thursday, October 10, and at the entrance on the first floor of the library from Saturday, October 11 to Sunday, October 12. All participants must register here.
- You will receive your name tag at the registration desk on October 11 (Sat.) - 12 (Sun.). Please be sure to wear it at the venue.
- No one will be allowed to enter or leave any buildings or classrooms other than the venue during the conference.
- Smoking is not permitted in the venue. Please note that there is no smoking area available.

● Wi-Fi access at the venue

- Kushiro Campus of Hokkaido University of Education is participating in eduroam. You can use eduroam to connect to the venue's Wi-Fi. However, we cannot guarantee the connection speed. There is no other wi-fi service available at the venue.
 - For more details about “eduroam”, please visit: <https://www.eduroam.jp/en>

● About Accommodations

- Please make your own accommodation arrangements. The Organizing Committee will not make any reservations or provide mediation services.
- Please refer to “4. Venue” to secure a place to stay.

● About Lunch

- The cafeteria of Hokkaido University of Education, Kushiro Campus will not be open during the conference.
- Please use the classrooms for meals.
- Please take your trash home with you.

● Others

- There is no cloakroom. Please carry your valuables with you.

Available Online: October 9 (Thursday) – Oral presentations

October 10 (Friday) – Students & Young Members’ Meeting, Seminar on Article Writing

October 12 (Sunday) – English Presentation Session, International Exchange Meeting

- The oral presentations (online) will be given using the Zoom online conferencing system. Please participate by connecting to the Internet from your computer, tablet, or smartphone.
- Please check your computer operation, internet connection, video/audio, etc. in advance. You can test your login here: <https://zoom.us/test>.
- Please note that you will be responsible for any additional costs incurred for online participation, such as communication fees.

- Meeting IDs and passcodes will be sent directly to the registrants approximately one day before the event.
- When you join a meeting, please set your name as it appears on Zoom as “Name (Your Affiliation)”.
- Those who wish to participate online must follow the presentation and auditing procedures specified by the Organizing Committee. The Japanese Society for Environmental Education will not be held responsible for any problems that may occur when presenting at the online conference.
- Please do not record, tape-record, or screenshot video, audio, text logs, etc. during the presentation without the presenter's permission. Disclosure of such information to third parties by posting on social networking sites is also prohibited.
- Please follow the instructions of the chairperson of each session regarding the use of the chat function and questions during the presentation.
- Due to the limited number of Zoom connections, do not use multiple devices for simultaneous connections.
- Please understand that the chairperson and support staff may, at their discretion, forcibly turn off participants' microphones, cameras, screen sharing, etc., if there is any behavior that interferes with the smooth progress of the event.

6 . Oral Presentations

Face-to-face Presentations

<Preparations>

- Presenters are requested to bring their own PCs and tablets for presentation. No PCs will be available for rent at the venue. Please prepare an environment where you can use the HDMI terminal for connection to the projector.
- The operation of the PC is the responsibility of the presenter.
- Please bring your PowerPoint and other slide data on a USB memory stick with you on the day of the event, just in case. Please check your USB memory stick for viruses by yourself.
- Presenters are requested to check the connection during the session changeover time.

<Presenters>

- Presenters are requested to wait at the front of the room by the beginning of a presentation before your turn.
- Presenters are required to state the title of their presentation and your name at the beginning.
- Presenters are requested to inform the audience at the beginning of their presentation whether or not they are allowed to take photographs of the slides and other materials of their oral presentations.
- The presentation time will be 15 minutes (12 minutes for presentation and 3 minutes for questions).
- The cues during the presentation are as follows:

First Bell: 10 min

Second Bell: 12 min (End of Presentation. Please stop immediately.)

Third Bell: 15 min (End of Q&A, Please change with next presenter.)

- In each session, three (or two in some cases) consecutive presentations will be followed by a “general discussion” of approximately 10 minutes. General discussion may include questions common to all presenters in the session and may ask presenters to discuss with each other (Presenters are asked to remain in the room until the end of the general discussion of their session).

<Chairpersons>

- The chairperson is responsible for the entire session. Please take responsibility for the progress of the session from the presentation to the general discussion.
- Please be punctual when proceeding.
- Please have the questioner state his/her name and affiliation at the beginning.
- Please ensure that the discussion is not biased toward any particular presenter or speaker.
- Each session will consist of three (or two) consecutive presentations followed by a 10-minute “General Discussion”. The “General Discussion” should not be merely an extension of the question period, but should include questions common to all presenters in the session and discussion among presenters.

Online Presentations * For presenters of October 9 (Thursday) and some presenters of English Presentations Session on October 12 (Sunday)

<Preparations>

- Please confirm and enter the Zoom meeting ID and passcode that will be sent to the registrant.
- When you join the meeting, please enter your name as it appears on Zoom in the order of “[Presenter] Name (your affiliation)”.
 - Example: [Presenter] Kushine Tokachi (University of Okhotsk)
- Please make sure to connect in a telecommunication environment with sufficient connection speed.
- If you have a headset or earphones with a microphone, we recommend using them.
- Please check the audio, etc. in advance here (<https://zoom.us/test>).

<Presenters>

- Oral presentations will be given via Zoom.
- Presenters must be present at the meeting at least 5 minutes before the start of their session.
- The presentation time will be 15 minutes (12 minutes for presentation and 3 minutes for questions).
- The cues during the presentation are as follows:

First Bell: 10 min

Second Bell: 12 min (End of Presentation. Please stop immediately.)

Third Bell: 15 min (End of Q&A, Please change with next presenter.)

- Presenters are requested to remain in the meeting room until the end of the general discussion of their respective sessions.

<Audiences>

- When joining a meeting, please enter your name as it appears on Zoom, in the order of “Name (Affiliation)”.
- Cameras and microphones must be turned off when listening to the presentations.
- Please follow the chairperson's instructions regarding the use of the chat function.
- Click on the reaction button (raise your hand) when you want to ask a question. After being nominated by the chairperson, turn on the camera and microphone and ask your question.
- Please cooperate for smooth operation.

<Chairpersons>

- Please take responsibility for the progress of the session from the presentation to the general discussion.
- Before starting a session, please state whether the chat function is available or not.
- Please be punctual when proceeding.
- Please have the questioner state his/her name and affiliation at the beginning.
- Please ensure that the discussion is not biased toward any particular presenter or speaker.

7 . Poster Presentations

<Preparations>

- Presenters must post their posters in the designated location by 9:15 am on Saturday, October 11.
- Poster space is limited to one A0-size poster per exhibition.
 - (H:1189mm x W:841mm, simili paper size <1090mm x 790mm> is also acceptable)
- The convention committee will prepare studs for attaching posters. Please do not use your own tape.
- If you prohibit the taking of photographs of your poster for presentation, please post a notice by yourself.

<Presenters>

- Presenters are requested to wait in front of their posters during the core time (12:00-13:00) on October 12 (Sunday) for the Q&A session.
- Outside of the core time, the presentation will be free to browse, so presenters do not need to be there.

<Removing Your Poster>

- Presenters are requested to remove their posters after 1:00 pm on Sunday, October 12.
- Posters posted after 2:30 pm will be disposed of by the Organizing Committee. Please note that we will not keep them.

8 . Independent Research Projects

- The organizer is responsible for setting up the venue for the face-to-face meeting and for all operations such as the progress of the event, etc. After the event, please return the venue to its original state.
- The representative and members are responsible for facilitating the event.
- Please keep strictly to the end time.

9. Events for Conference Participants

● Excursions

- **Pre-registration is required.** Please see the excursion list below for details.

<https://x.gd/uPrhw>

- To apply for an excursion, please fill out the form below.

<https://x.gd/19pJW>

- Please check the spreadsheet below (36th Annual Meeting Excursion Application Status) for the latest application status.

<https://x.gd/vdGV0>

■ List of Excursion Themes

1. Japanese crane in Tsurui Village in autumn
2. Tour of Lake Toya and Mt. Us: Tour to think together about “what it means to live on the Earth” through the UNESCO World Geopark theme “Coexistence with Volcanoes”
3. Mt. Tarumae round-trip trekking in autumn (in Tomakomai)
4. Visiting Morindonomori
5. Local observation tours of rare species around Lake Shikaribetsu
6. Digital Detox Experience Tour at Farm Inn Torch in Tsurui Village
—Hokkaido's great nature, autumn harvest, migratory birds, Hokkaido horses, fireplace, ranch, relaxing—
7. Shiretoko Gaku, Rausu Town's integrated education for elementary, junior high and high school
8. UNESCO School Workshop
9. Kushiro Marshland Development and Invasive Alien Species Issues
10. The place we live—Walking in the City, Feeling the City: Environmental Education Connected through Kushiro
11. KIWC 30th Anniversary Project: Communicating the Mechanism of Wetlands
12. Rausu facility tour and Hokkaido Arrangement project WILD experience
13. The Soil Will Save Us--Why the Ground Beneath Our Feet Could Be the Answer to the Global Climate Crisis
14. Guided Tour: Hokkaido Animals & Ainu Culture & Red-crowned Crane Rescue Guide @ Kushiro City Zoo

	9:00	10:00	11:00	12:00	13:00	14:00	15:00	16:00	17:00	18:00	19:00	20:00
October 9 (Thurs)	Oral Presentations (online)				Oral Presentations (online)							
					Excursion 1: Japanese crane in Tsurui Village in autumn							
	Excursion 3: Mt. Tarumae round-trip trekking in autumn											

	9:00	10:00	11:00	12:00	13:00	14:00	15:00	16:00	17:00	18:00	19:00	20:00	
Oct10 (Friday)	Excursion 4: Visiting Morindonomori				Registration	Students & Young Members' Meeting (face-to-face & online)				Registration	Members' Roundtable Meeting		Seminar on Article Writing (face-to-face & online)
	Excursion 7: Shiretoko Gaku, Rausu Town's integrated education for elementary, junior high and high school students												
	Excursion 5: Local observation tours of rare species around Lake Shikaribetsu				Excursion 6: Digital Detox Experience Tour at Farm Inn Torch in Tsurui Village				Venue: Hokkaido University of Education Kushiro Campus				

	9:00	10:00	11:00	12:00	13:00	14:00	15:00	16:00	17:00	18:00	19:00	20:00
Oct13 (Monday)	Excursion 10: The place we live—Walking in the City, Feeling the City: Environmental Education Connected through Kushiro											
	Excursion 9: Kushiro Marshland Development and Invasive Alien Species Issues											
	Excursion 2: Tour of Lake Toya and Mt. Usu (2)											
	Excursion 11: KIWC 30th Anniversary Project: Communicating the Mechanism of Wetlands											
	Excursion 12: Rausu facility tour and Hokkaido Arrangement project WILD experience											
Excursion 13: The Soil Will Save Us—Who the Ground Beneath Our Feet Could Be the Answer to the Global Climate Crisis												

● **Students & Young Members' Meeting**

Date & Time: October 10 (Friday) 3:00-5:00 pm

Venue: Room 303 & Online

Contents:

We will hold “Students and Young Members' Meeting”, an exchange program for students and young members. This project is planned as a place where people interested in environmental education and the natural environment can gather, regardless of their position or experience, to exchange information and discuss their concerns. You do not need to have any expertise in environmental education to participate. This will be conducted both in-person and online.

1. Self-introduction (research field, topics of interest, social issues of interest, etc.)
2. Group Discussion (example of talk theme):
 - > Awareness of and efforts to conserve biodiversity and the environment
 - > Attitudes toward the environment and their change
 - > Approaches to children in educational practice
 - > How to promote understanding of the environment among adults

Targeted for:

- Students and young people interested in environmental education and the natural environment
- For those who belong to the Department of Education and Teacher Training Programs
- Those who wish to share past educational experiences.

No experience or field of research is required. Please feel free to join us. We sincerely look forward to your participation.

Application: If you wish to participate in the “Gathering of Students and Young Professionals,” please register below.

<https://x.gd/mJH0E>

● **Members' Roundtable Meeting**

Date & Time: October 10 (Friday) 5:30-6:30 pm

Venue: Room 303 & Online

● Seminar on Article Writing

Date & Time: October 10 (Friday) 6:45-8:30 pm

Venue: Room 303 & Online

Featuring:

1. What are the points “to be accepted” as submitted paper and response letter.

Dr. Kazuhiko Nakamura (Graduate School of Frontier Sciences, The University of Tokyo; Editorial Board Chair for second season of the JSFEE)

2. How Environmental Education practitioners write papers.

Mr. Tsukasa Watanabe (SAPIX Center for Environmental Education; Editorial Board Chair for third season of the JSFEE)

Leaflet: <https://x.gd/4lbML>

● Reception Dinner

Date & Time: October 11 (Saturday) 6:30-8:30 pm

Venue: University Cafeteria

You can register on the day of the event. Please sign up at the reception desk.

Regular member: 5,000 Yen

Non-member: 5,000 Yen

Student: 2,000 Yen

Non-member student: 2,000 Yen

★ Contributions are welcome!

★ You are welcome to bring your own local sake and specialty products. Please bring it to the reception venue.

● English Presentation Session

Date & Time: October 12 (Sunday) 9-10 am

Venue: Group Study Room 1 in Library

In this meeting, there will be an “English Presentation Session” during oral presentations (10:00 - 11:00) on October 12 (Sun.), which will be conducted entirely in English. The format will be oral presentations (face-to-face and online) and Q&A sessions.

We encourage not only participants who will be presenting in English, but also members to actively participate in the English Reporting Subcommittee. Please see the presentation program (p.35) for details. For online participants, please check the Zoom ID and passcode sent to participants.

● International Exchange Meeting

<Session 1>

Date & Time: October 12 (Sunday) 11:00 am-Noon

Venue: Group Study Room 1 in Library

Theme: Biodiversity in Japan and Indonesia

Contents: Presentation of papers and exchange of opinions by two contributors to the “Environmental Education in Asia.”

Targeted to: Members interested in international exchange and international collaboration (both researchers and practitioners)

Language: English

<Session 2>

Date & Time: October 12 (Sunday) Noon-1:00 pm

Venue: Group Study Room 1 in Library

Theme: Biodiversity in Japan and Indonesia

Theme: Activities of the Society's International Exchange Committee Members

Contents: Introduction of activities by each member of the International Exchange Committee (

Targeted to: Members interested in international exchange and international collaboration (both researchers and practitioners)

Language: English (and Japanese)

● **Research Projects (Event prepared by Research Committee)**

Date & Time: October 12 (Sunday) 1:00-2:15 pm

Venue: Rooms 201, 202 and 301

Contents:

In FY2025, five new research subcommittees were launched, bringing the total number of research groups and subcommittees to 11. In the past, presentations and research exchanges were held at one venue, but due to the increase in the number of meetings, this year's meeting will be held at three venues in parallel, as shown below.

All those interested in the activities of the study group are encouraged to attend.

Program:

Time	Room I (201)	Room II (202)	Room III (301)
13:00~13:30	A-2: Research Group for the Promotion of Environmental Education Activities	B-1: Environmental Education Inquiry Journal Study Group	A-1: Study Group on School Environmental Education A-3: Research Group on Pedagogy of the Environmental Education Studies
13:30~13:45	B-2: Challenges and Possibilities for Sustainable Energy and Environmental Education	B-3: Study Group on Public Hazard Education	C-2: Collaboration among academic societies for biodiversity promotion and awareness
13:45~14:00	C-1: Environmental Learning Facilities Network	C-4: Childcare in Nature and Environmental Education	C-3: Study Group on Environmental Education for Social Change
14:00~14:15		C-5: Forest ESD in the Early Childhood and Elementary School Connections	

10. Public Events

● Keynote Speech “The Future of Environmental Education Studies from a Biodiversity Perspective”

Date & Time: October 11 (Saturday) 1:00-2:30 pm

Venue: Small Hall and Room 303

Speaker: Mr. Masashi OHARA (Emeritus Professor, University of Hokkaido, Chief Director of the Hokkaido Environment Foundation)

Abstract:

Currently, there are approximately 250,000 plant species growing on the Earth. Each species, like us humans (*Homo sapiens*), produces offspring and maintains a system (life history) in which generations are passed down from generation to generation. In this talk, I will introduce environmental education on the life history of the perennial plant *Trillium camschatcense*, which is one of the representatives of spring in Hokkaido.

Trillium camschatcense grows on the forest floor of stable deciduous broadleaf forests and requires more than 10 years from seed to flowering. Flowering individuals need to be visited by pollen-carrying insects to produce seeds, and the seeds produced are then transported and moved by ants. In other words, this plant life history is maintained in symbiosis with diverse organisms, including the growing environment. This series of life history studies was conducted in a large colony of this plant in Seaside Park, Hiroo Town, Tokachi Region, Hokkaido. The Hiroo Town Board of Education, as well as many townspeople, assisted us in carrying out the research.

Therefore, we decided to consult with the Board of Education to create an environmental education program for elementary and junior high school students on the theme of “Life History of *Trillium camschatcense*” in the hope of not only publishing the results of our research as a paper but also giving back to the people of Hiroo Town in any way we can. The program consists of two main pillars. One is the preparation of “Educational Material Pamphlets” and “Instructional Manuals”. The other is “field observation meetings.” The educational brochure “*Trillium camschatcense* teaches us the importance of nature” presents the life history of *Trillium camschatcense*, including its habitat, growth process, population structure, and reproductive mode. On the other hand, the “Instruction Manual” consists of a ‘Classroom’ section and a ‘Research’ section so that teachers can use this brochure to independently develop their own classes.

The “Field Observation” was held at Seaside Park, where we have been conducting research and surveys. After a classroom lecture using brochures at the school, the students were taken to the actual site to see, touch, and learn about the life history process from seed to flowering, and the importance of preserving the forests in which they grow in order to maintain their life history.

This project was launched in 2006. Environmental Education programs based solely on university research run the risk of becoming disconnected from actual educational settings. Fortunately, we were able to create this project with the full cooperation of the Board of Education and the elementary and junior high schools of Hiroo Town. However, not everything went successfully. I will share with you some of the challenges that have been and will be faced, including the consolidation of elementary schools in rural areas, changes in government employees and school teachers, the new coronavirus, my retirement, and so on.

● Public Symposium

<First session>

Date & Time: October 11 (Saturday) 2:45-4:15 pm

Public Symposium 1: “Biodiversity Conservation and the Issues of Renewable Energy”

Venue: Room 303

Speakers: Ms. Yukiko Watanabe (Institute for Raptor Biomedicine Japan)

Mr. Ryota Nakamura (Beppo Elementary School, Kushiro Town)

Mr. Kento Sato (Shinryu Junior High School, Akkeshi Town)

Mr. Shigeharu Terui (Environmental Awareness Promotion Network – PEG (Non-Profit Organization))

Coordinator: Mr. Shinya Tamai (Hokkaido University of Education, Kushiro Campus)

Mediators: Dr. Takashi Nomura (Hokkaido University of Education, Kushiro Campus)

Mr. Shigeharu Terui (Environmental Awareness Promotion Network – PEG (Non-Profit Organization))

Mr. Shinya Tamai (Hokkaido University of Education, Kushiro Campus)

Abstract: How can we utilize renewable energy while preserving biodiversity? Although seemingly non-conflicting, they have many challenges. In solar power generation, panel installations are rapidly expanding in wetlands and agricultural lands in eastern Hokkaido, affecting the organisms that live there. In addition, in wind power generation in western and northern Hokkaido, many birds have been killed by wind propellers installed along the coastline. Renewable energy is increasingly being installed as part of environmental and energy policies, but there is room now for consideration of installations that disregard local ecosystems and biodiversity conservation. What kind of learning is being developed in school education in response to these conditions? We would like to exchange opinions through examples of educational practices at elementary and junior high schools in eastern Hokkaido.

Public Symposium 2: “Biodiversity and Childcare in Nature”

Venue: Room 304

Speakers: Mr. Hayato Nakamura (Mihara Friend Kindergarten, Certified Early Childhood Education and Care Center)

Ms. Emi Shimada (Nature Watching Center)

Coordinator: Dr. Sumiyuki Tanaka (Junior College of Sapporo Otani University)

Mediators: Dr. Sumiyuki Tanaka (Junior College of Sapporo Otani University)

Ms. Sachiko Orui (Kuromatsunai Bunamori School)

Abstract: In childcare and early childhood education, educational activities must be conducted from the perspective of sustainability. In addition, childcare in nature, which seeks to actively incorporate nature and life experiences into childcare and early childhood education, is becoming more active. While there is little disagreement about the role of nature in young children's development, there is less depth to the debate about what theories and activities nature care should be based on if it is to be positioned as environmental or biodiversity education. This

symposium will discuss natural childcare as environmental education and biodiversity education based on examples of such efforts in Kushiro City and Sapporo City.

Public Symposium 3: “Biodiversity and Zoo/Museum Education”

Venue: Small Hall

Speakers: Mr. Osamu Hasegawa (EnVision Conservation Office (Non-Profit Organization))

Mr. Manabu Kubota (Environmental Partnership Office Hokkaido (EPO Hokkaido))

Ms. Yuko Iima (Kushiro City Zoo)

Coordinator: Mr. Hideto Okuyama (National Ainu Museum)

Mediators: Mr. Takuya Asakura (Sapporo Maruyama Zoo)

Mr. Hideto Okuyama (National Ainu Museum)

Mr. Manabu Kubota (Environmental Partnership Office Hokkaido (EPO Hokkaido))

Abstract: As the biodiversity crisis worsens, “nature-positive” (nature revitalization) has become a common goal worldwide, and interest in and expectations for the role of museums, zoos, and other facilities that play this role are increasing. This symposium will introduce recent trends in nature positivity as well as efforts by museums in Hokkaido, the development and building of cooperation in environmental education at zoos, and practical examples of community-based conservation education, and discuss the future direction of cooperation and efforts among institutions.

<Second session>

Date & Time: October 11 (Saturday) 4:30-6:00pm

Public Symposium 4: “Biodiversity and Wetland Education/School Education” (Room 303)

Venue: Room 303

Speakers: Mr. Hisashi Shinjo (Kushiro International Wetland Center)

Mr. Osamu Harada (Tsurui-Ito Tancho (Red-crowned Crane) Sanctuary)

Ms. Asuka Kodo (Seimei Elementary School, Kushiro City)

Coordinator: Mr. Masashi Kawabata (Hokkaido Prefectural Board of Education)

Mediators: Mr. Masashi Kawabata (Hokkaido Prefectural Board of Education)

Mr. Kengo Oka (Hokusho University)

Mr. Keigo Hori (Kushiro International Wetland Center)

Abstract: Wetlands are known as one of the hotspots of biodiversity, and it is estimated that more than 80% of Japan's wetlands are located in Hokkaido. However, wetlands have been in decline since the Meiji period, and conversely, have become “endangered species hotspots” due to their unique ecosystems. We will discuss how wetlands, which are a treasure trove of educational material—the irreversibility of wetland decline due to human impact on nature, adaptation and evolution of organisms, vegetation succession, ecosystem services, etc.—can be used as a site for environmental education, what kind of wise use should be made of them from the perspective of ecotourism, and whether what needs to be learned is being adequately addressed.

Public Symposium 5: “Biodiversity and Invasive Alien Species Issue” (Small Hall)

Venue: Small Hall

Speakers: Mr. Shigeharu Terui (Environmental Awareness Promotion Network – PEG (Non-Profit Organization))

Mr. Kazunori Tanaka (Association for Thinking about Crayfish and Familiar Waters)

Ms. Toru Ishihara (Geo-Zari Club: Volunteer Group for U.S. Crayfish Control in Engaru Town)

Coordinator: Mr. Kazuki Matsuoka (Regional Environmental Planning, Inc. – Hokkaido Branch)

Mediators: Mr. Takanori Nakamoto (Shokei University)

Ms. Moemi Miyagi (Hokkaido Environment Foundation)

Mr. Kazuki Matsuoka (Regional Environmental Planning, Inc. – Hokkaido Branch)

Abstract: This symposium will focus on the Uchida crayfish, which has recently expanded its habitat throughout Japan, starting with the fundamental question, “What is an invasive species?”. In Hokkaido, its expanding distribution is having a noticeable impact on native species, and various measures are required in the field. Speakers will include a specialist involved in the extermination, research, and study of Uchida crayfish and a specialist involved in the conservation of Japanese crayfish, who will speak from their respective perspectives. In addition to the ecology of the Uchida crayfish, the actual damage it causes, and the current status and issues of local countermeasures, this year's session will report on efforts to conserve the Japanese crayfish, and explore the possibilities for ecosystem conservation and community-based responses.

Public Symposium 6: “Biodiversity Conservation and Economic/Industrial Activities”

Venue: Room 304

Speakers: Mr. Yoshinori Masaki (Daido Steel Co., Ltd.)

Mr. Michiaki Masada (Masada Farm)

Ms. Kazuhiko Motoba (Nihon Nohyaku Co., Ltd.)

Dr. Kuniaki Tanaka (University of Hokkaido)

Coordinator: Mr. Tsukasa Watanabe (SAPIX Center for Environmental Education)

Mediators: Dr. Kuniaki Tanaka (University of Hokkaido)

Mr. Tsukasa Watanabe (SAPIX Center for Environmental Education)

Abstract: The primary industry is an industry that cannot exist without consideration for biodiversity, but since agriculture is also the habitat of large numbers of only a single species, there is a possibility that the prosperity of large-scale agriculture will disturb the ecosystem, in addition to those caused by pesticides and other chemicals. In addition, corporate CSR activities for ecosystem conservation have been taking place in many places, and activities to selectively conserve nature that provides “useful ecosystem services” may have a reverse impact on ecosystems in the future. However, agricultural lands and corporate green spaces are also important to increase the number of OCEMs (areas contributing to biodiversity conservation outside of protected areas). Therefore, ecosystem services are an indispensable concept for biodiversity conservation, but we will discuss the “merits” and “sins” that the human-oriented concept of “usefulness” has brought to Hokkaido and other parts of Japan.

● Environmental Education Messe (Exhibition Booth)

As a program open to the public (free of charge), activities of various organizations related to environmental education will be introduced, and environmental books and products will be exhibited and sold. Please stop by as a place for communication between the various organizations and the conference participants and members.

Date & Time: October 11 (Saturday) 9:00 am-6:00 pm

October 12 (Sunday) 9:00 am-4:15 pm

Venue: Classroom Building 1st floor Hall, Research Institute for Remote and Small School Education

Exhibitors List: Total of 9 groups

Hokkaido Environmental Foundation

Hokkaido Research Organization

Japan Environmental Education Forum (JEEF)

General Incorporated Association Museum ESD Community

General Incorporated Association Chise

Regional Environmental Planning, Inc. – Hokkaido Branch (4 booths as follows)

1. Nature Clips: Exhibit of tools for sale to expand the enjoyment of nature
2. Animal Log: Create your own list of living creatures easily with the Ministry of the Environment's app. Support on how to use is available!
3. JT Forest Shakotan: Nurturing the future in Shakotan Town, Hokkaido! Sales of integrated learning time & environmental learning materials to learn from biodiversity.
4. Examples of Conservation in Hokkaido: Exhibit introducing Hokkaido's biodiversity, which is conserved by companies.

11. 発表プログラム

●口頭発表（オンライン）

※登壇者（筆頭者）として登録された1名のみ氏名を掲載しています。

10月9日（木）：9:00～12:00

会場	9:00～	9:15～	9:30～
オンライン	[36O01] 酒井佑輔 ブラジルにおける環境教育と パウロ・フレイレ～1992年の 地球サミットを中心に～	[36O02] 岡山咲子 環境課題解決人材の育成に向 けた全学副専攻プログラムに おける可能性と課題	[36O03] 深川幹 身近な環境問題をめぐる社会 的ジレンマを題材とした環境 教育プログラムの実践

会場	9:45～	10:00～	10:15～
オンライン	[36O04] 遠藤晃 ユネスコ BR におけるカモシ カ ESD プログラムの実践研 究 -カモシカすごろくによる探 究への誘い-	[36O05] 鳥屋尾健 ビジターセンターでの地域の 学校との連携の実際～山梨県 立八ヶ岳自然ふれあいセンタ ーの事例から～	[36O06] 渡辺修 動植物調査の実習にもとづく 地域の自然環境の課題の学習 ー釧路湿原自然再生を題材と した高校生向けプログラムの 開発と実践ー

会場	10:30～	10:45～	11:00～
オンライン	[36O07] 金澤裕司 別海町西別湿原ヤチカンバ群 落の教材化の可能性とその課 題	[36O08] 田中絢音 楽器演奏による CO2 排出と その削減方法に関する学びの 場の提供活動ー大阪万博と U 商業施設における実践事例ー	[36O09] 森田ケイコ 持続可能な食を考える体験型 食育授業の実践報告 ー大阪・ 関西万博およびK小における 取り組みからー

会場	11:15～	11:30～	11:45～
オンライン	[36O10] 清水万由子 大学生による公害経験継承の 試みの成果と課題	[36O11] 千葉駿 鳥海高原の循環型農業を教材 とした持続可能な教育の事例	[36O12] 諸頭純 高校生による麦芽かす有効利 用法の模索を通じた地域コミ ュニティ創出の実践報告

10月9日(木)：13:00～16:00

会場	13:00～	13:15～	13:30～
オンライン	[36O13] 荒井雄大 ツキノワグマとヒトのより良い関係を考えるシリアスボードゲームの開発と保全教育プログラムのデザイン	[36O14] 松本朱実 シリアスボードゲームを取り入れた保全教育プログラムにおけるツキノワグマに関わる参加者の学びの評価	[36O15] 川尻剛士 核開発地域の教育と人間形成に関する研究：その到達点と課題

会場	13:45～	14:00～	14:15～
オンライン	[36O16] 後藤忍 原子力災害時の安定ヨウ素剤の服用に関する教材等の調査と福島第一原発事故時の教訓に関する教材の作成	[36O17] 小柳知代 植物種ごとに異なる世代間での知識継承の実態：地域景観の差異に着目して	[36O18] 降旗信一 環境教育の場としての「障がい者グループホーム」の可能性～取り残された人はどうすれば環境教育に参加できるのか～

会場	14:30～	14:45～	15:00～
オンライン	[36O19] 斉藤千映美 生命理解に関わる体験・経験を考えるー教員養成課程の学生を対象とする予備調査からー	[36O20] 工藤充 ESD の構造的制約と省察的な学習活動を架橋するための鍵概念としての「スペース」の検討	[36O21] 中澤朋代 小中学校の環境教育を支援する地域官民連携システム

会場	15:15～	15:30～	15:45～
オンライン	[36O22] 河村幸子 奄美大島における環境教育の課題	[36O23] 石山雄貴 高校生の地域学習を支える地域的基盤の形成に関する研究	[36O24] 野口扶美子 ツバルの気候移民の移動と非移動：エンパワメントと伝統知の観点からの再考

●口頭発表（対面）

※登壇者（筆頭者）として登録された1名のみ氏名を掲載しています。

10月11日（土）：9:15～10:10

会場	テーマ	9:15～	9:30～	9:45～	10:00～
A 会場 201 教室	自然 保育	[36A01] 田中住幸 森のようちえんにおける安全管理の現状と展望	[36A02] 中本貴規 幼児期の自然体験における参画型保育実践の可能性について～討議民主主義の視点から～	[36A03] 栃原華子 渚の自然環境をいかした幼児期の自然体験活動の取り組みー島根県の潟湖での保育実践を事例に	総合 討論
B 会場 202 教室	生物 多様性	[36B01] 幸田真梨子 自然共生サイト認定申請に対する関係者の意識ー教育機関敷地の事例からー	[36B02] 畑田彩 生物多様性を客観的に扱うためにはー授業での課題と解決の試みー	[36B03] 加藤美由紀 しぜんと生物多様性の価値についての再整理	総合 討論
C 会場 301 教室	動植物	[36C01] 大原尚之 生きものの系 YouTuber の活動に関する現状報告ー生フェス 2025 を通してー	[36C02] 二井菜月 身近な動物に対する抵抗感の要素と関わり方の許容程度・意欲	[36C03] 飯沼慶一 「虫嫌い」の傾向とその原因の分析ー大学生への質問紙調査よりー	総合 討論
D 会場 302 教室	地域 づくり ・ まち づくり ①	[36D01] 藤井徳子 「子どもの森づくり」を起点とした地域共創プロセスとその理論的考察ー利賀子どもの森づくりデザインキャンプを事例にー	[36D02] 芳賀普隆 離島の環境問題対応と地域活性化に関する地域の連携・協働と学生の教育実践ー佐世保市・高島を事例としてー	[36D03] 渡部裕司 中学校における「地域をつくる主権者を育てる」実践にかかわる教師の困難さ	総合 討論
E 会場 304 教室	人材 育成①	[36E01] 村井伸二 環境教育における企業研修の可能性に関する研究ーアドベンチャープログラムに着目してー	[36E02] 板倉浩幸 環境教育士の可能性	[36E03] 井村礼恵 幼少接続のための教員研修シートの開発ー環境構成に着目してー	総合 討論

10月11日(土) : 10:15~11:10

会場	テーマ	10:15~	10:30~	10:45~	11:00~
A 会場 201 教室	環境観 ・ 自然観	[36A04] 大塚啓太 18 歳までの自然体験 はその後の自然への 愛着心を育むか？	[36A05] 菅山明美 アジア・オセアニアの 大学生の環境観 ～2025JAL スカラシ ッププログラム実践報 告～	[36A06] 石田浩基 環境学習施設を活用し た保育実習による中学 生の意識変容	総合 討論
B 会場 202 教室	環境 整備	[36B04] 増田直広 鶴見大学ビオトープ (エコ・ビオガーデン) 再整備事業の取組 みと意義	[36B05] 落合佳子 保育園における「完成 しない庭づくり」を通 じた子どもの体験と学 び	[36B06] William R. Stevenson III LEARNING to GROW: ワールドカルチャー 理論とスクールガーデ ンの国際的広がり	総合 討論
C 会場 301 教室	共生 教育	[36C04] 高橋正弘 ヒグマとの共生可能 性と環境教育の可能 性について～札幌市 民へのアンケート調 査から～	[36C05] 福井智紀 参加型思考ツールを用 いたヒグマ対策に関す る意思決定・合意形成 のための学校教材開発 の構想	[36C06] 本田裕子 コウノトリの生息域拡 大を背景とした野生復 帰にかかる環境教育の 現状と課題	総合 討論
D 会場 302 教室	地域 づくり ・ まち づくり ②	[36D04] 中口毅博 "中高生主体の社会活 動が地域の持続可能 性に及ぼす効果の分 析—次世代SDGs ラボ を中心として—"	[36D05] 萩原豪 地域資源を活かした ESD 実践—桑茶を媒介 とした高大産連携とま ちづくり—	[36D06] 元木埋寿 地域コミュニティにお ける役割認識と ESD 展 開の可能性	総合 討論
E 会場 304 教室	人材 育成②	[36E04] 湊秋作 企業人への生物多様 性セミナー(2021 年～ 2025 年)=体験・知識・ ワークショップで=	[36E05] ニノ宮リムさ ち 環境正義の時代を拓く 高等教育の役割—立教 大学環境学部開設の取 組を中心に	総合討論	

10月11日(土) : 11:15~12:10

会場	テーマ	11:15~	11:30~	11:45~	12:00~
A 会場 201 教室	評価	[36A07] 小玉敏也 ESD 学習が生徒の定住 指向に与える影響	[36A08] 許容瑜 環境教育志向の児童心 理的ウェルビーイング 尺度の改訂と信頼性・ 妥当性の検討	[36A09] 内藤光里 京都市における脱炭素 ライフスタイル推進事 業の評価と事業者の参 画を促す要因	総合 討論
B 会場 202 教室	ICT	[36B07] 奇二正彦 市民科学×スマホ×自 然共生サイトの可能性 — 教育・観光・インナ ーブランディングへの 応用	[36B08] 中村和彦 各小学校の状況に応じ た森林学習单元「森か らみえる」実践による 森林認識への影響の差 異	[36B09] 岩崎慎平 プログラミング機器を 活用した幼児期環境教 育プログラムの開発	総合討 論
C 会場 301 教室	海洋 教育	[36C07] 山本康介 日本の里海～三重県鳥 羽市における令和の里 海づくり事業実践と海 洋教育～	[36C08] 小久保慶一 砂浜海岸の減少と保全 を考える領域横断的学 習	[36C09] 山田貴浩 鳴き砂の調査活動を通 じた地域連携による持 続的な環境教育の取り 組み	総合 討論
D 会場 302 教室	教材 研究①	[36D07] 森淳子 実務経験から作成した 中高向け環境教育資料 の公開	[36D08] 大島順子 世界自然遺産やんばる の教材化における学習 資源の分析	[36D09] 宗田勝也 国連子ども環境ポスタ ーを用いた教育実践の 再検討ーミクロな平和 教育の観点からー	総合 討論

10月12日（日）：9:00～9:55

会場	テーマ	9:00～	9:15～	9:30～	9:45～
A会場 201 教室	環境教育原論	[36A10] 佐藤秀樹 「余白」をデザインする環境教育－スロー・ラーニングの視点からみる実践と理論の接点－	[36A11] 佐々木啓 環境教育に対する本学会での下位カテゴリ－および日本における関心についての一考察	[36A12] 原子栄一郎 降旗信一前学会長の呼びかけに、みんなで応えよう！「環境教育の存在意義という大きな問いの前にたって」	総合 討論
B会場 202 教室	教材研究②	[36B10] 津田美子 地域学習素材を活用した「魚のたんじょう」と「流れる水のはたらし」を関連づけた学習	[36B11] 河野晋也 教科の学習におけるESD：見方・考え方に着目して	[36B12] 内山大空 Escape Room（脱出ゲーム）の観点を導入した気候変動に関する学習教材の構想	総合 討論
C会場 301 教室	環境教育関連施設	[36C10] 林美帆 公害資料館ネットワーク 12 年の到達点と課題	[36C11] 原賀いずみ 戦後の上野動物園に誕生した子ども動物園とサマースクールに対する一考察	総合討論	
G会場 305 教室	奨励賞審査（詳細は p.27）				

10月12日（日）：10:00～10:55

会場	テーマ	10:00～	10:15～	10:30～	10:45～
A 会場 201 教室	協働学 習・連 携教育 ①	[36A13] 森朋子 コンフリクトに対処 する環境教育プログ ラムの考察	[36A14]小堀洋美 自然再興と自然共生 社会の実現に向けた 市民科学：その多面的 アプローチと環境教 育の役割	総合討論	
B 会場 202 教室	農業	[36B13]吉村親 小学校の農業体験学 習における現状と課 題－ホールスケー ル・アプローチによ る分析に着目して－	[36B14] 宇都宮俊星 農業を取り巻く社会 的課題を基盤とした 探究学習の組み －教科横断を目指し た展開と課題－	総合討論	
C 会場 302 教室	ESD/ SDGs ①	[36C12] 渋谷晃太郎 岩手県内の高校にお ける SDGs 脱炭未来 ワークショップの実 施	[36C13] 藤岡達也 SDGsの観点から捉え た日本海側の災害に 関する防災・減災・復 興	[36C14] 原 理史 "GIS を活用した地理総合 授業における ESD 実践 －「ミステリーワークショ ップ」を組み込んだ普通科 高校での授業研究－"	総合 討論
F 会場 図書館 グルー プ学習 室 1	英語報告部会（詳細は p.27）				
G 会場 305 教室	奨励賞審査（詳細は p.27）				

10月12日(日) : 11:00～11:55

会場	テーマ	11:00～	11:15～	11:30～	11:45～
A 会場 201 教室	協働学 習・連 携教育 ②	[36A15] 田開寛太郎 湿地教育における自治 体と学校・大学の連携 可能性の検討ーラムサ ール条約登録湿地を事 例にー	[36A16] 飯田貴也 産学民連携の学び合い による次世代環境人材 の育成ー学生のボラン ティア活動を“ガクチ カ”につなげるー	[36A17] 浜 泰一 大学フィールドワーク 授業における大学間連 携ーエコツアーの計 画・実践とその評価	総合 討論
B 会場 202 教室	環境教 育関連 制度	[36B15] 福田光郷 バイオマス割当プラス チックに関する認知と 適切な情報表示方法の 検討	[36B16] 福田 美紀 太平洋島嶼国における 気候変動を要因とする 人の移動の現況ー若者 層に着目してー	[36B17] 元鍾彬 韓国環境教育の現状と 課題	総合 討論
C 会場 301 教室	ESD/ SDGs ②	[36C15] 樋口拓 地域資源体験が育む興 味喚起と環境保全行動 意図: 淡路島の ESD 実 践から総合的な学習の 時間への展開を探る	[36C16] 鈴木隆弘 ESD と探究学習 ー高 等学校社会系教科の分 析を中心としてー	[36C17] 小林 慶子 座学型講座は「里山暮 らし」の価値を認知さ せられるのか	総合 討論
F 会場 図書館 グルー プ学習 室 1	英語報告部会 (詳細は p.27)				
G 会場 305 教室	奨励賞審査 (詳細は p.27)				

●口頭発表（英語報告部会）

※登壇者（筆頭者）として登録された1名のみ氏名を掲載しています。

10月12日（日）：10:00～10:45

会場	10:00～（オンライン）	10:15～（オンライン）	10:30～（対面）
F会場 図書館 グループ 学習 室1	[36F01]張 格根多仁 NGO-School Partnerships for Education for Sustainable Development: Comparative Case Studies from China and Japan Sub-cases of the AEI Project in Inner Mongolia and the ASAZA Project in Ibaraki	[36F02] 近藤順子 Theoretical Reexamination of “Vernacular” for Transforming Pedagogies in the Anthropocene	[36F03] 栗原友佳 Analysis of Current situation of Agricultural Experimental Learning in ordinary Education in Japan - Focusing on the definition of Agriculture-

●口頭発表（奨励賞審査）

10月12日（日）：9:00～10:40

会場	9:00～	9:05～	9:18～	9:31～
G会場 305 教室	挨拶	[36G01] 山本豪 アグロエコロジー実践と しての学校給食の意義と 可能性-兵庫県丹波篠山 市を事例に-	[36G02] 得居千照 「子どものための環境哲 学」の理論と実践ー環境 教育としての哲学ウォー クの実践分析を通してー	[36G03] 大森和樹 デューイの教育哲学から 考える博物館としての動 物園・水族館

会場	9:44～	9:57～	10:10～
G会場 305 教室	[36G04] 石井康平 市民言説の影響を可視化す る環境政策過程デジタルア ーカイブの構築：市民の理 解および効力感の涵養に向 けて	[36G05] 内田大資 協働的探究学習による「社会 と繋がる学びの構築」ー環境 問題の探究を通じた自律型 学習者の育成ー	[36G06] 萩原達也 「黒い水事件」から公害のな いまちづくりを学んだ子ど もたち

会場	10:23～
G会場 305 教室	[36G07] 菊岡永里子 障がい児・不登校児童のため の環境教育プログラムの開 発ー包括的な生涯学習とエ イブリズムへの考慮を通し てー

●ポスター発表

10月11日(土) 9:00～13:00・10月12日(日) 9:00～13:00(コアタイム 12:00～13:00)

※登壇者(筆頭者)として登録された1名のみ氏名を掲載しています。

<ポスター会場：教室棟1階ホール、へき地教育研究センター>

【研究発表】

- P 研 01 寺田千里 同行者属性による学習効果の違い：動物園での Web アプリを活用した気候変動教育の試み
- P 研 02 苟美慧 中国深圳市におけるコミュニティガーデンの自然体験活動に対する住民の認識・関心
- P 研 03 福田愛紗 日本の基礎自治体による生物多様性施策としての環境教育の課題と展望
- P 研 04 ZHANG MOAYUAN モリブデン鉱山におけるリサイクル廃棄物
- P 研 05 史聖寿 環境研究 × 学生の本音：授業におけるグループワークの壁を読み解く
- P 研 06 崔曉瑩 中国企業における ESG 戦略 - 財務パフォーマンスの面からの解析
- P 研 07 阪本梨々果 学習経験の違いで“気づき”は変わる？ 大学生の多様性に着目して
- P 研 08 折居巧朗 自然体験活動プログラムが参加者の自然観に及ぼす影響－高校生を対象としたキャンプ実習を事例として－
- P 研 09 韓煜明 都市近郊湿地における利用者の認識からみる文化的生態系サービスの空間的特性
- P 研 10 池野正基 都道府県行政の Web サイトにおける生物多様性に関する情報発信の現状
- P 研 11 長島優斗 放置竹林の利活用に関する NPO 法人・企業等の活動及び団体間の連携の状況
- P 研 12 鶴田俊介 遊覧船における海鳥への餌付けの方法に関する意識
- P 研 13 伊東千聖 大学生の身近な屋外空間における自然に対する認知の傾向
- P 研 14 小宮山輝 屠体給餌を活用した展示が来園者の意識に与える影響－飯田市立動物園を事例に
- P 研 15 石川成亜 公民科教育における世界遺産教育の教材化の検討－富士山の「顕著な普遍的価値」をめぐって－

【実践報告】

- P 実 01 平尚恵 SDGs 授業における「性の多様性」の伝え方の工夫－生物多様性を切り口とした LGBTQ 当事者の実践から－
- P 実 02 丸本倍美 野生動物の骨格標本から学ぶ SDGs
- P 実 03 津村風帆 動物福祉を伝えるための教育プログラム：京都市動物園「テンジクネズミのすきを MIKKE」の実践評価
- P 実 04 成田美恵子 日本茜を題材とした地域課題の解決に向けた探究学習の実践
- P 実 05 佐藤凱 3D プリンタを活用した環境教育事例～さわる・見る・持ち帰れるレプリカ作製～
- P 実 06 松木生 学生主導の自然観察会における学び－都留文科大学「うら山観察会」での実践－
- P 実 07 高橋良子 都市部の子どもに向けた自然環境への興味関心の向上を目的としたプログラムの開発

- P 実 08 熊谷豊 認定「体験の機会のある場」の環境教育・ESD 活動の調査報告
- P 実 09 竹本裕之 幼稚園におけるオタマジャクシを森から預かる活動の実践：保育環境と活動の関わりに着目して
- P 実 10 佐方 初奈 グローバルな気候変動とローカルな地域医療の深い関係－高校生と考える持続可能な医療
- P 実 11 廖慧怡 Environmental Education Practices in China's National Parks: A Design Exploration of the Huangpi Wetland Nature Trail in the Qianjiangyuan-Baishanzu National Park
- P 実 12 菅原南美 木と他の動植物との繋がりについての「気づき」を促すための木育教材開発
- P 実 13 奥村昌美 亀岡の自然豊かな河川環境を未来につなげる
- P 実 14 堀川咲希子 富士山周辺の自然・文化資源を活かした地域連携実践

●自主課題研究

※代表者として登録された1名のみ氏名を掲載しています。

10月12日（日）：14:45～16:15（対面）

自主課題研究①（201 教室）

質的研究法を学ぶ会 12～質的研究法を自らの研究・実践に活かす～（高橋宏之）

自主課題研究②（202 教室）

ヒッケル『資本主義の次に来る世界』を読む：社会変革のために環境教育はなにができるのか（大倉茂）

自主課題研究③（301 教室）

環境教育士研究会（板倉浩幸）

自主課題研究④（304 教室）

木こりのドキュメンタリー映画「Forest Trail」環境保全型・環境共存型林業の可能性を見る（菅山明美）

12. 自然災害等に伴う年次大会の中止基準・対応等について

日本環境教育学会 第 36 回年次大会（北海道）
大会実行委員長 能條 歩

日本環境教育学会 第 36 回年次大会（北海道）における、気象警報等の発令および解除における本会の対応を下記の通りとします。なお、皆様が会場に移動される際に起こるあらゆる事柄につきましては、学会および実行委委員会としては責任を負いかねますこと、あらかじめご了承くださいようお願い申し上げます。皆様、ご無理はせず、安全性に問題がある場合は移動を再度ご検討いただくようお願いいたします。

気象庁二次細分区域における釧路南西部で、大会期間中に気象警報・津波警報・噴火警報等が発令された場合、大会開催は以下の通りとなりますので、ご注意ください。

なお、以下の基本方針にご留意ください。

- ・釧路地方以外の災害に関しては原則として以下の中止基準等は適用しない
- ・自治体・大学等による避難指示等があれば、以下の中止基準・対応にかかわらずそれに従う
- ・（陸上輸送機関・航空機等の）交通障害および気象状況による道路閉鎖などには対応しない
- ・釧路に集合できた実行委員だけによる対応になる可能性があるため、下記の基本方針も変更になる可能性がある（大会 HP を随時参照）
- ・当初からオンライン併用になっていないセッションをオンライン併用に変更することはしない
- ・前日から警報等が予測される場合、前日の 17 時までに大会 HP と参加者への一斉メールで対応を連絡するが、17 時以降に事案が発生した場合は以下の中止基準・変更要領に沿って運営する
- ・事前に予定されていない zoom アカウントや wi-fi 環境の提供はしない
- ・エクスカージョンは、主催者があらかじめ中止基準・対応を決めておき、参加者と連絡調整する

【参考】気象庁

気象警報・注意報や天気予報の発表区域

<https://www.jma.go.jp/jma/kishou/known/saibun/>

警報・注意報

釧路地方

https://www.jma.go.jp/bosai/warning/#area_type=offices&area_code=014100

1) 上記の地域に警報が発令された場合の対応

※学会ウェブサイトの大会ページを随時更新予定

<https://www.jsfee.jp/meeting/annual-conference/>

■大会初日 10 月 9 日（木）

予定通りオンラインのプログラムを実施

■大会 2 日目 10 月 10 日（金）

09 時までに解除 → 予定通り開催

13 時までに解除 → 若手会員の集い以降は実施

※環境教育メッセ事前搬入は警報解除後とする

13 時までに解除されない → 当日の全てのプログラムを中止、環境教育メッセ事前搬入中止

■大会 3 日目 10 月 11 日（土）

06 時までに解除 → 予定通り開催

09 時までに解除 → 口頭発表は中止、ポスター発表および午後以降のプログラムを実施

13 時までに解除 → 16 時から基調講演と公開シンポジウムを時間後ろ倒しで実施、懇親会は中止

13 時までに解除されない → 当日の全てのプログラムを中止

※環境教育メッセの搬入は警報解除後とし、搬入後は随時開始

■大会 4 日目 10 月 12 日（日）

06 時までに解除 → 予定通り開催

09 時までに解除 → 午後のプログラムを実施

09 時までに解除されない → 全てのプログラムを中止

2) 上記により中止された場合

・大会が中止された場合でも、口頭発表およびポスター発表は中止として扱わず、発表が行われたと見なします。

・交通機関の不通や欠航などで発表ができなかった場合も、発表中止として扱わず、発表が行われたと見なします。このため、基本的に発表時間帯の変更はせず、連絡なしに発表時間にいない場合は欠席とみなします（同じセッション内であれば発表順の入れ替えが可能な場合がありますので、いずれにしても hokkaido2025.jsfee@gmail.com へご一報ください）。

・大会参加費および懇親会参加費の払い戻しは行いません。

・環境教育メッセの出展は全日程取り止めた場合のみ、出展料を返金します。

以上

Contact Information (for inquiries)

Conference Organizing Committee for the 36th Annual Meeting of the Japanese Society for Environmental Education (Hokkaido)

E-mail: hokkaido2025.jsfee[at]gmail.com (please change [at] to @)

Inquiries related to the annual meeting should also be directed to the above e-mail address.

Webpage for the 36th Annual Meeting of the Japanese Society for Environmental Education (Chiba):

<https://www.jsfee.jp/meeting/annual-conference/>

Secretariat for the Japanese Society for Environmental Education

infotec Co. Ltd.

2-6-1 Ochiai, Tama City, Tokyo, 206-0033, Japan

Tel: +81-42-311-3355

Fax: +81-42-311-3356

e-mail: office[at]jsfee.jp (please change [at] to @)